

Grapevine F&I 4.42

Zip Code Explosion

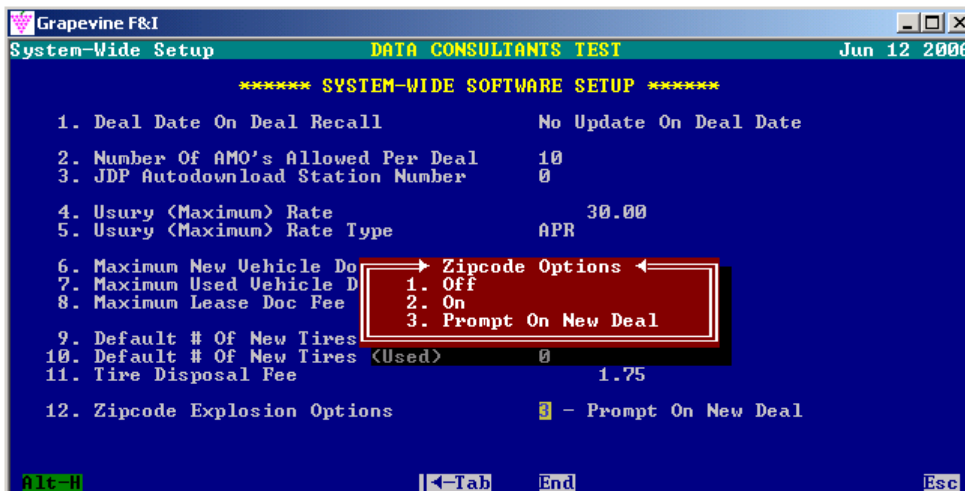
July 26, 2006

A Zip Code Explosion has been added to Grapevine F&I's Buyer Information, Bank, Insurance, Deal Defaults, and Main Deal Screens. When a zip code is entered in a zip code field, the appropriate city and county fields will automatically be populated as will the associated default tax rate*.

*Applies to Main Deal Screen prompt and Buyer Zip Code. Tax Rates will only be populated if set in either the City or County File on the "P-Screen".

I. Zip Code Explosion Defaults

Zip Code Explosion defaults can be set in System Wide Software Settings including activating a prompt on the Main Deal Screen displayed when starting a new deal that will populate Buyer Information (and tax rate*) without having to move to the A-Screen. The default setting is "Off".



System-Wide Software Setup: "O → System Setup → System-Wide Software Setup"

Zip code Options apply only to Buyer Information and loading default Tax and License amounts.

1. **Off** - Zip Code explosions will not occur on the Buyer or Co-Buyer Zip Code fields on the A-Screen, and a prompt will not appear on the Main Deal Screen when starting a new deal.
2. **On** - Zip Code explosions will occur on the Buyer and Co-Buyer Zip Code fields on the A-Screen. A prompt will not appear on the Main Deal Screen when starting a new deal.

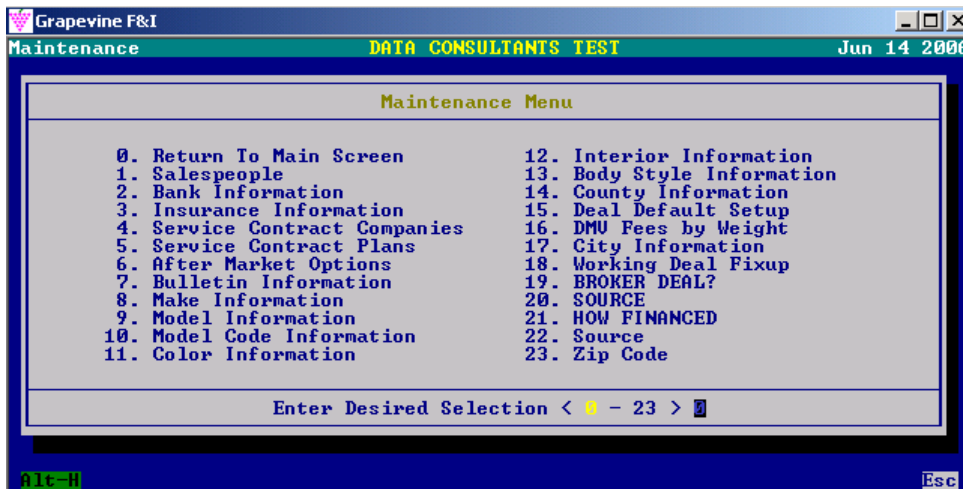
ZipCodeExplosion_EndUser.doc (6/14/2006)

CONFIDENTIALITY Note: This document contains information from Data Consultants which is proprietary, confidential, and/or legally privileged. The information is to be used by the individual(s) it is intended for. If you are not the intended recipient, we would like to remind you that the use, disclosure, copying, distribution, or the taking or not taking of any action in reliance on the contents of this information is strictly prohibited.

- Prompt On New Deal** - A Zip Code prompt will appear on the Main Deal Screen when starting a new deal. Zip Code explosions will also occur on the Buyer and Co-Buyer Zip Code fields on the A-Screen.

II. Default Tax and License Amounts

Default Tax and License amounts for exploded zip codes are pulled from the City File setup in Grapevine F&I Maintenance (P-Menu) under “City Information”.



Maintenance Menu: “P”

If a City File has not been setup, or the exploded City is not listed in the City File, the tax rate associated with the exploded County will become the default. County Tax and License information is also setup from the Maintenance Menu under “County Information”.

A prompt will always appear confirming you want to update the deal with previously setup default tax and license amounts of the City or County listed when a zip code is exploded.

Update Deal With FRESNO Tax and License Amounts? < [Y] or [N] > Y

Enter “N” [No] at the prompt if you do not want to update the rate and amount.

III. Zip Code Explosion On Main Deal Screen

When starting a new deal, a prompt for Buyer Zip Code will occur on the Main Deal Screen if “Prompt On New Deal” has been set as the Zip Code Option in System-Wide Software Setup (O).

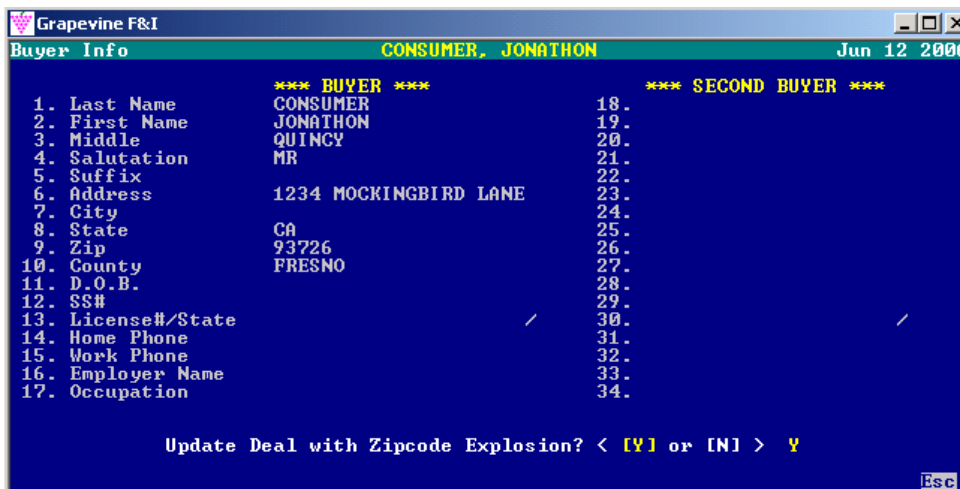


When a zip code is entered, a zip code explosion will occur populating the Buyer City and County (and Zip Code) fields on the Buyer Information Screen (A).

A prompt will display confirming you want to update the deal with previously setup default tax and license amounts of the City or County listed. Enter “N” [No] at the prompt if you do not want to update the rate and amount.

IV. Zip Code Explosion On Buyer Information Screen (A)

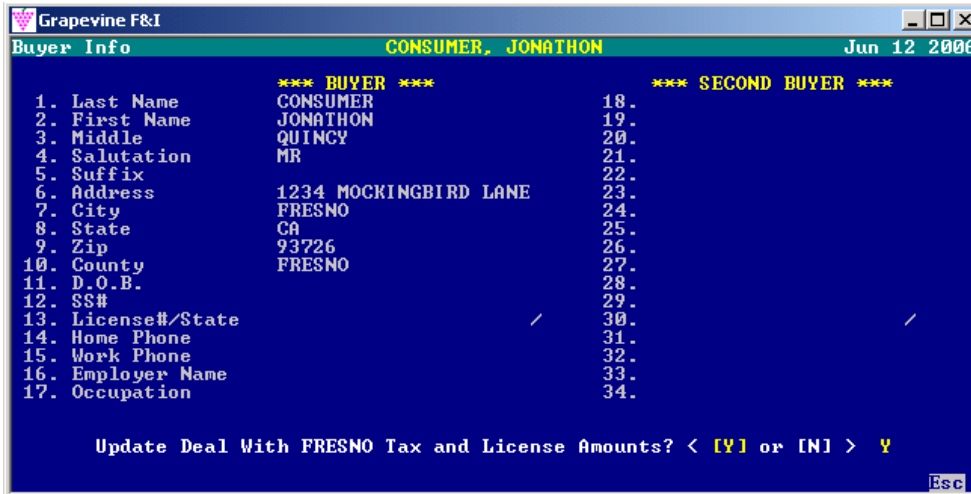
If a County already exists on the Buyer Information screen, users will be prompted after entering a Zip Code if they wish to update the deal with Zip Code Explosion.



ZipCodeExplosion_EndUser.doc (6/14/2006)

CONFIDENTIALITY Note: This document contains information from Data Consultants which is proprietary, confidential, and/or legally privileged. The information is to be used by the individual(s) it is intended for. If you are not the intended recipient, we would like to remind you that the use, disclosure, copying, distribution, or the taking or not taking of any action in reliance on the contents of this information is strictly prohibited.

If the user selects “Y” [Yes], the County and City will be updated and an additional prompt will be displayed asking users if they want to update the deal with previously setup default tax and license amounts of the City or County listed. Enter “N” [No] at the prompt if you do not want to update the rate and amount.



V. Bank, Insurance, and Deal Defaults

Zip Code explosion for Bank and Insurance Zip Codes on the D-Screen, as well as Deal Defaults (“P”) is always set to “On”. When entering a zip code in any of these fields, the City and County will be extracted and the appropriate fields populated.

VI. Invalid Zip Codes and Explosion Data Updates

Zip Code explosion data is stored in the Grapevin F&I Data directory. To ensure that you have the latest zip code data, run Grapevine F&I’s Web Update¹ regularly. If an invalid zip code is entered or does not exist in the data file, an explosion will not take place and any previously entered City and County will remain.

¹ Contact Data Consultants Support for details on Grapevine F&I’s Web Update
ZipCodeExplosion_EndUser.doc (6/14/2006)